

ANTHEM GOLF & COUNTRY CLUB RENTAL HOUSE

Elevated Lot Backs to Wash & Home is Like New

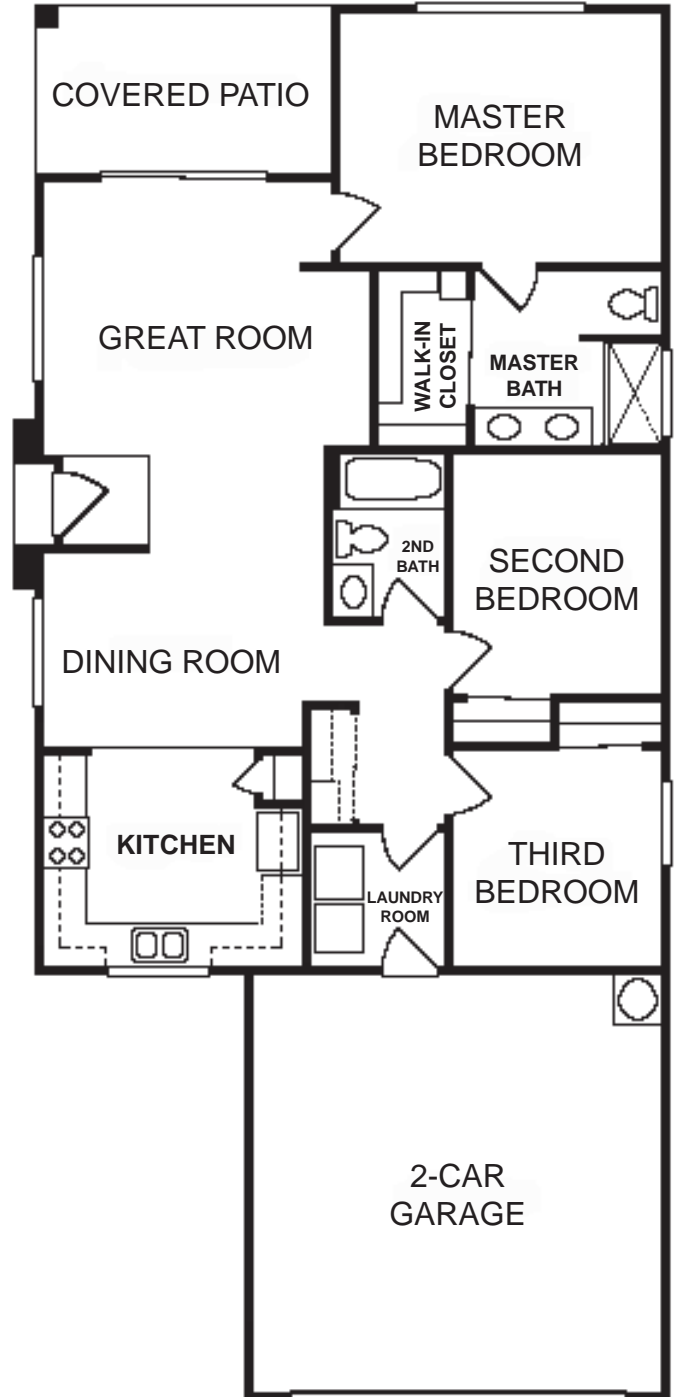


- 3 Bedrooms
- 1.75 Bathrooms
- 2-Car Garage with Opener
- Covered Patio
- 1,266 square feet per Builder
- Stainless-steel Gas Range
- Stainless-steel Microwave
- Stainless-steel Dishwasher
- Stainless-steel French Door Refrigerator
- Washer and Dryer
- Window Blinds
- Professional Landscaping
- Owner Pays HOA and Club Dues

For Lease at \$1,000 per month

For more information, please contact
Campbell & Associates LLC
www.CampbellRealtors.net

Doug Campbell, Realtor
Doug@CampbellRealtors.net
(623) 261-6198



"Palo Verde" Series "Espino" Floorplan

1725 W. Morse Drive, Anthem, AZ 85086



All information provided is deemed reliable but is not guaranteed. Buyer should verify the accuracy of information provided to their satisfaction.

