

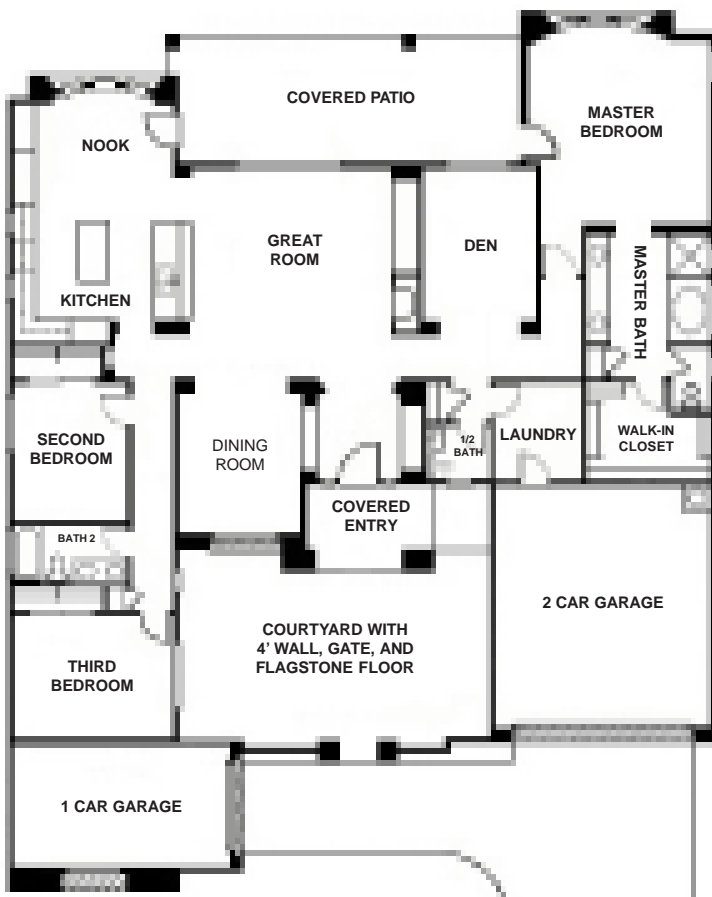
# ANTHEM GOLF & COUNTRY CLUB FURNISHED RENTAL HOME



**Fantastic View of 12th Hole Green, Water, and Daisy Mountain from Backyard**

*"Coastal" Series "Laguna" Model*

Upgraded Front Elevation "B" with Stone



- 3 Bedrooms plus a Private Den/Office
- 2.5 Bathrooms
- 3 Car Garage (2+1)
- 2,768 square feet per Builder
- \$100K in Builder Options & Owner Upgrades
- Upgraded Cherry Wood Cabinets Throughout
- Granite-slab Kitchen Countertops
- Stainless-steel Kitchen Appliances
- Real Wood (2 1/2") Window Blinds
- 7 Quality Ceiling Fan Fixtures
- New Light Fixtures Throughout
- 2-tone Paint Throughout
- Custom Built-in Entertainment Center
- Surround Sound Speakers in Great Room
- Ceiling Speakers in Den & Covered Patio
- Professional Landscaping

**For Lease at \$2,000 per month**

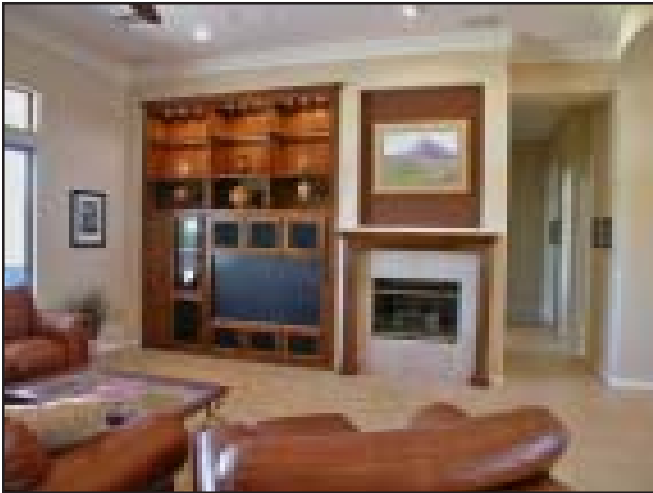
For more information, please contact  
Campbell & Associates  
[www.CampbellRealtors.net](http://www.CampbellRealtors.net)

**Doug Campbell, Realtor\***  
Doug@CampbellRealtors.net  
**(623) 261-6198**



All information provided is deemed reliable but is not guaranteed. Buyer should verify the accuracy of information provided to their satisfaction.  
\*Doug Campbell, Broker, is related to Owner.





Great Room features Gas Fireplace with Cherry Wood Fireplace Mantle, Built-in Cherry Wood Entertainment Center, 8" Crown Molding, Built-in Surround Sound Speakers, Ceiling Fan Light Fixture, and 2-tone Paint.



Kitchen features Granite-slab Countertops, Upgraded Cherry Cabinets, Stainless-steel Appliances, Stainless-steel Sink & Faucet, New Light Fixture in Nook, 8" Crown Molding, Real Wood 2.5" Horizontal Blinds. 3-tone Paint.



Entry Foyer has a New Light Fixture, 8" Crown Molding, Granite-slab Niche Countertops and 2-tone Paint. The Formal Dining Room has a New Light Fixture, 8" Crown Molding, and 2-tone Paint. The Foyer and Dining Room Windows have Real Wood 2.5" Horizontal Blinds.



This Home has Great Curb Appeal, featuring a 2-Car Garage & Separate 1-Car Garage, Upgraded Elevation "B" with Stone, Professional Desert Landscaping, Lighted Flagstone Walkway, Large Courtyard with Flagstone Floor, Custom Locking Gate, and Entry Lights.



Den/Study features a Window with a View of the Golf Green & Pond, Upgraded Carpet & Pad, Recessed Lights, Built-in Speakers, Ceiling Fan, and 2-tone Paint.



Master Bath features large Tub & Separate Shower, New Light Fixtures with matching bath accessories, Tiled Tub/ Shower/Vanity, Cherry Cabinets, and 2-tone Paint.